

LEGEND

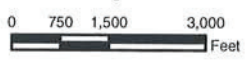
PROPERTY

- Site
- Chelsea Plant

Water Table Depth (feet bgs)

VALUE

- Data Problems
- 0-15
- 15-30
- 30-45
- 45-60
- 60-75
- >75



Base map information obtained from Michigan Center for Geographic Information



engineers
scientist
architects
constructors

fishbeck, thompson, carr & huber, inc.

Hard copy is intended to be 8.5"x11" when plotted. Scale(s) indicated and graphic quality may not be accurate for any other size.

Aggregate Ind.- Chelsea Operations

Waterloo Twp., Jackson County, Michigan

Hydrogeologic Review

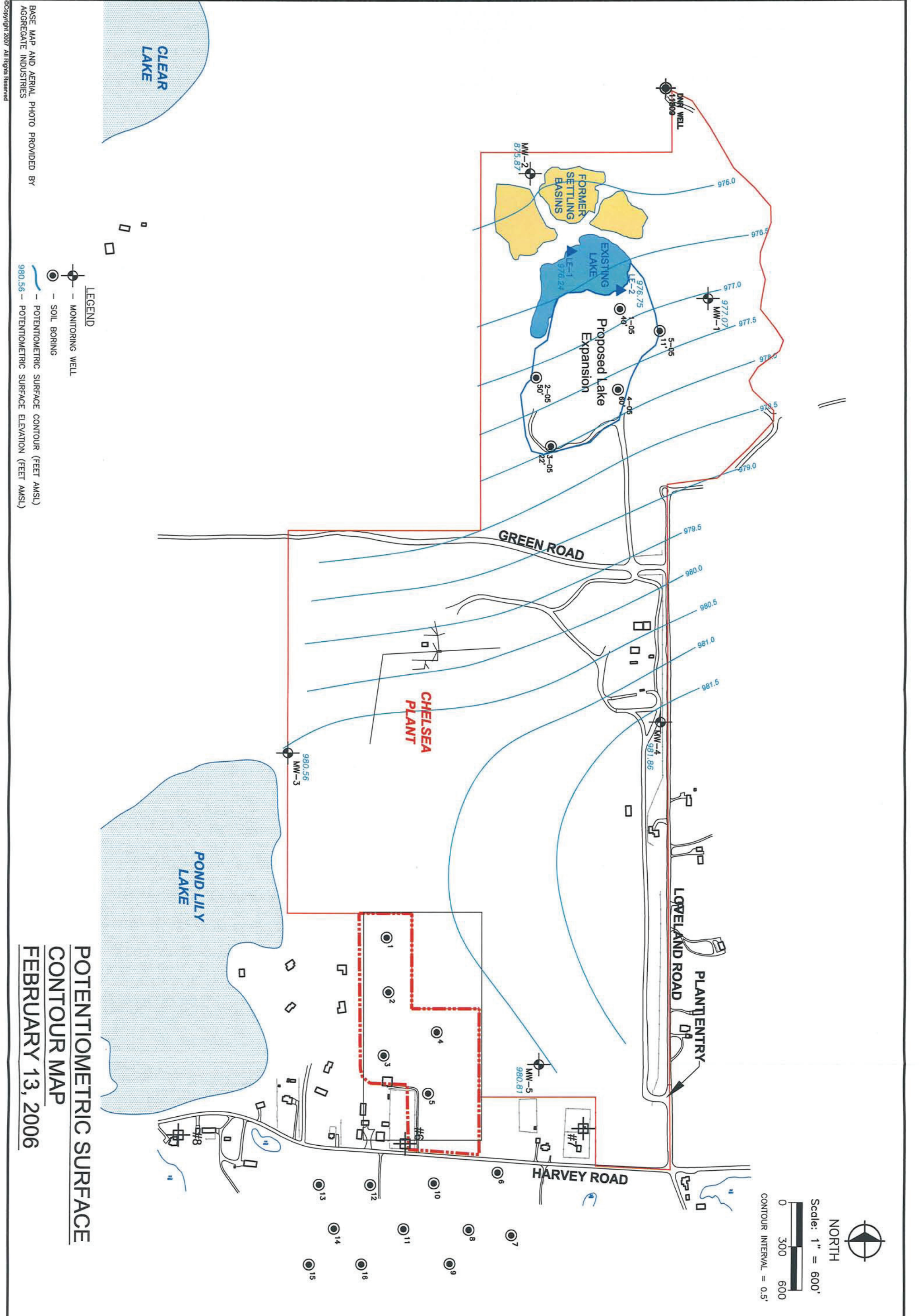
Waterloo Twp. Special Use Permit Application

PROJECT NO.
G06088C

FIGURE NO.
13

MDEQ DEPTH TO WATER TABLE MAP

PLOT INFO: I:\GARD\06088C\GIS\MAP_DOCUMENTS\WATER TABLE DEPTH.MXD DATE: 6/16/08 USER: AGS



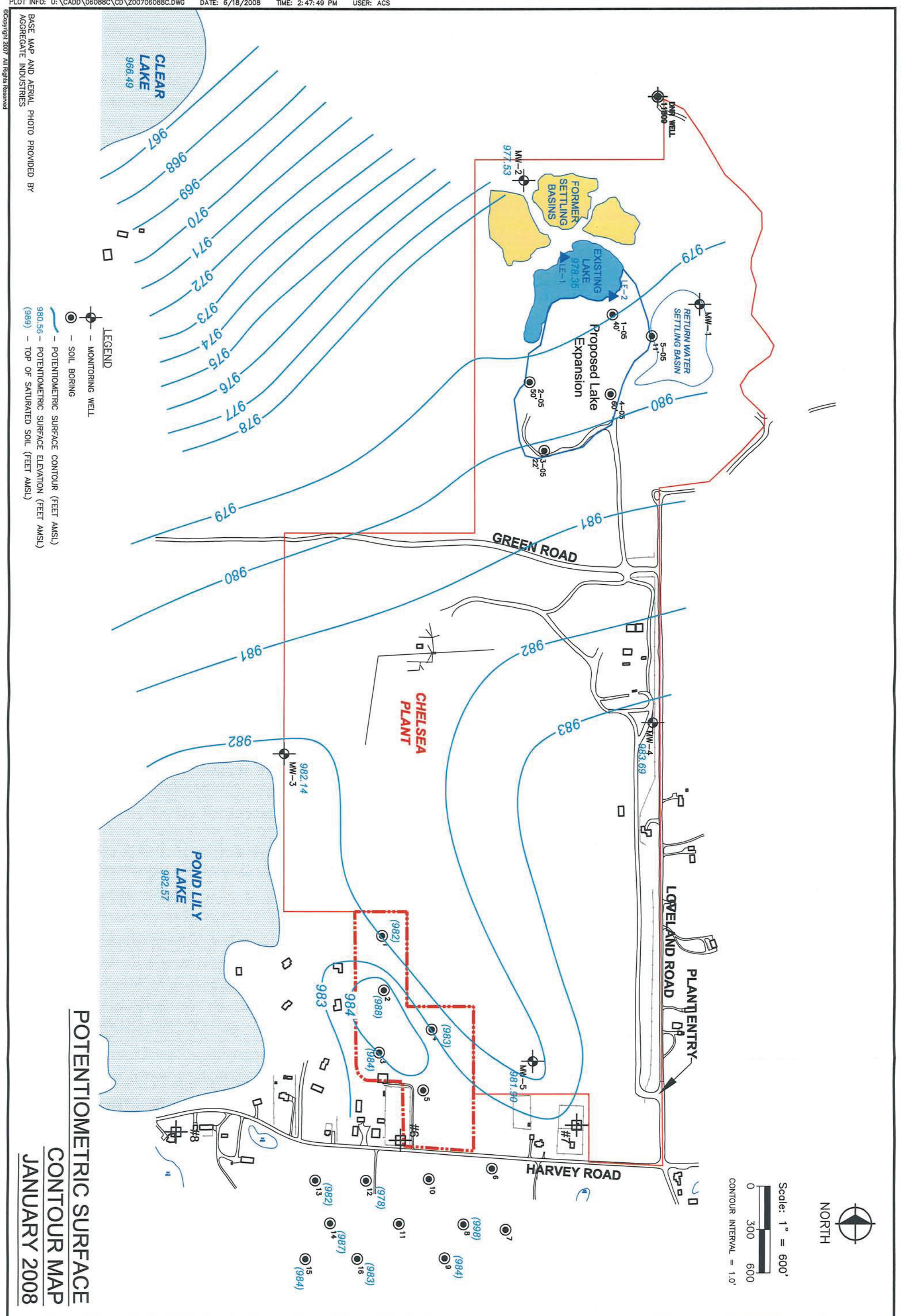
BASE MAP AND AERIAL PHOTO PROVIDED BY
 AGGREGATE INDUSTRIES

LEGEND
 - MONITORING WELL
 - SOIL BORING
 - POTENTIOMETRIC SURFACE CONTOUR (FEET AMSL)
 980.56 - POTENTIOMETRIC SURFACE ELEVATION (FEET AMSL)

**POTENTIOMETRIC SURFACE
 CONTOUR MAP**
FEBRUARY 13, 2006

NORTH
 Scale: 1" = 600'
 0 300 600
 CONTOUR INTERVAL = 0.5'

	engineers scientists architects constructors	fishback, thompson, carr & huber, inc. Hard copy is intended to be plotted. (Scale) indicated and graphic quality may not be accurate for any other size.
	<p align="center"> Aggregate Ind.- Chelsea Operations Waterloo Twp., Jackson County, Michigan Hydrogeologic Review Waterloo Twp. Special Use Permit Application </p>	
PROJECT NO. G06088C FIGURE NO. 14		



BASE MAP AND AERIAL PHOTO PROVIDED BY
 AGGREGATE INDUSTRIES

LEGEND

- MONITORING WELL
- SOIL BORING
- POTENTIOMETRIC SURFACE CONTOUR (FEET AMSL)
- 980.56 — POTENTIOMETRIC SURFACE ELEVATION (FEET AMSL)
- (989) — TOP OF SATURATED SOIL (FEET AMSL)

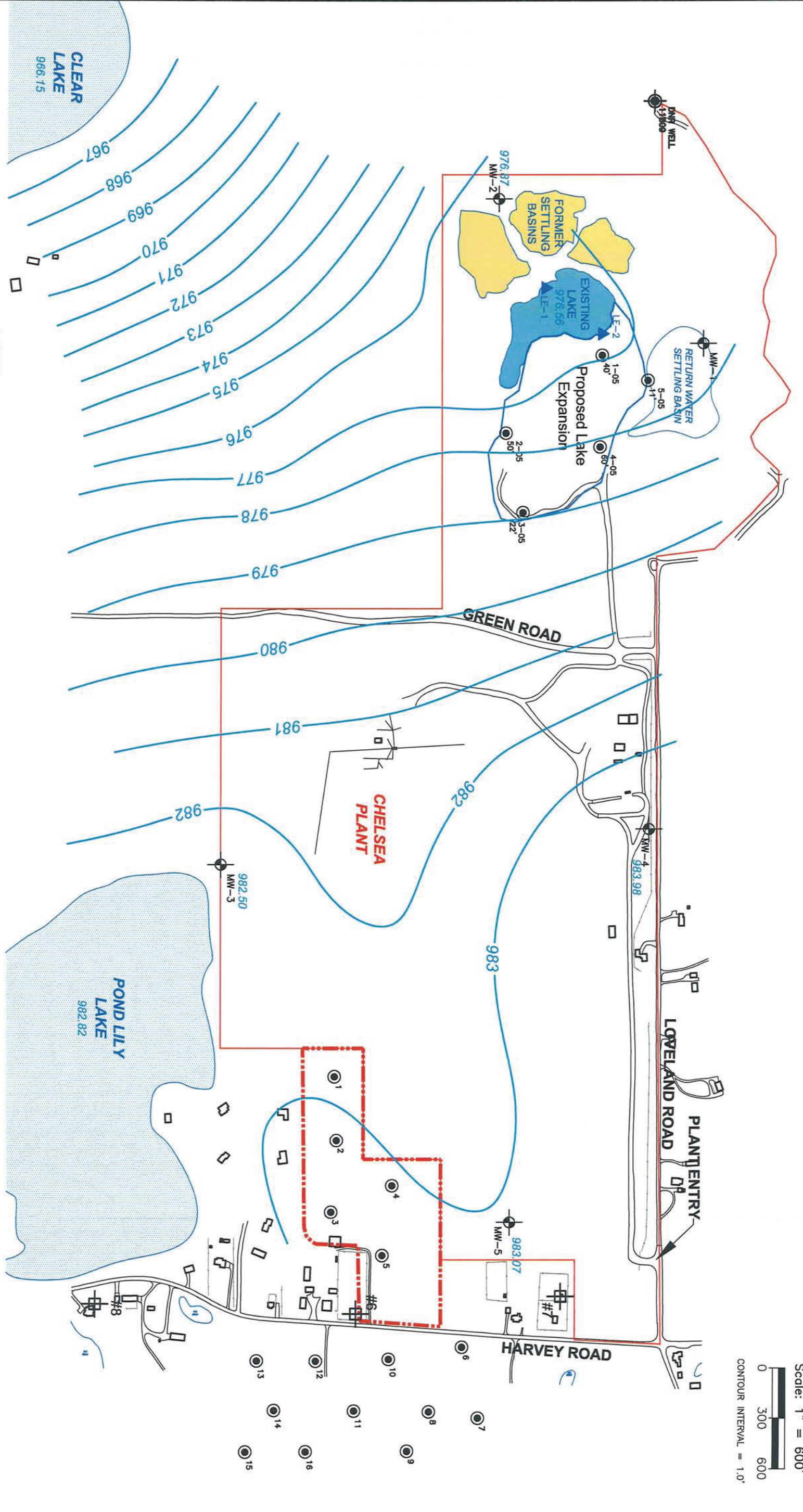
**POTENTIOMETRIC SURFACE
 CONTOUR MAP**
 JANUARY 2008



Scale: 1" = 600'
 0 300 600
 CONTOUR INTERVAL = 1.0'

	engineers scientists architects constructors	Aggregate Ind. - Chelsea Operations Waterloo Twp., Jackson County, Michigan Hydrogeologic Review Waterloo Twp. Special Use Permit Application	fibback, thompson, carr & huber, inc. Hard copy is intended to be 11"x17" when plotted. (Scale) Indicated end graphic quality may not be accurate for any other size.	PROJECT NO. G06088C ENCLOSURE <div style="font-size: 2em; font-weight: bold; margin-top: 10px;">15</div>
--	---	--	--	---

BASE MAP AND AERIAL PHOTO PROVIDED BY
 AGGREGATE INDUSTRIES



LEGEND
 - MONITORING WELL
 - SOIL BORING
 - POTENTIOMETRIC SURFACE CONTOUR (FEET AMSL)
 980.56 - POTENTIOMETRIC SURFACE ELEVATION (FEET AMSL)

**POTENTIOMETRIC SURFACE
 CONTOUR MAP**
 MAY 29, 2008



Scale: 1" = 600'
 0 300 600
 CONTOUR INTERVAL = 1.0'

	engineers scientists architects constructors	fibback, thompson, carr & huber, inc. Hand copy is intended to be 11"x17" when plotted. Scale(s) indicated and graphic quality may not be accurate for any other size.	Aggregate Ind.- Chelsea Operations Waterloo Twp., Jackson County, Michigan Hydrogeologic Review Waterloo Twp. Special Use Permit Application	PROJECT NO. G06088C ENCLOSURE 16
	POTENTIOMETRIC SURFACE CONTOUR MAP MAY 29, 2008			BASE MAP AND AERIAL PHOTO PROVIDED BY AGGREGATE INDUSTRIES