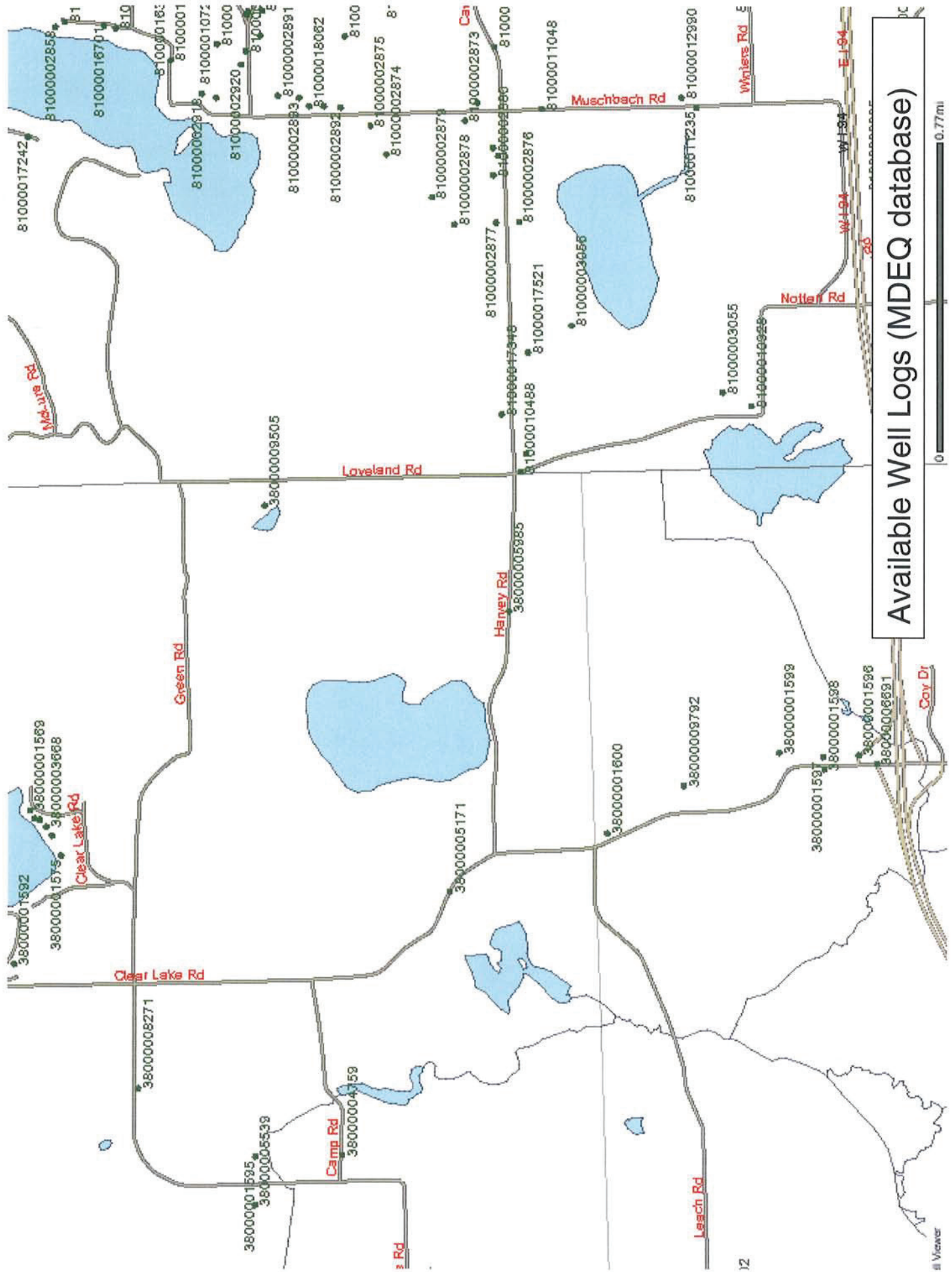
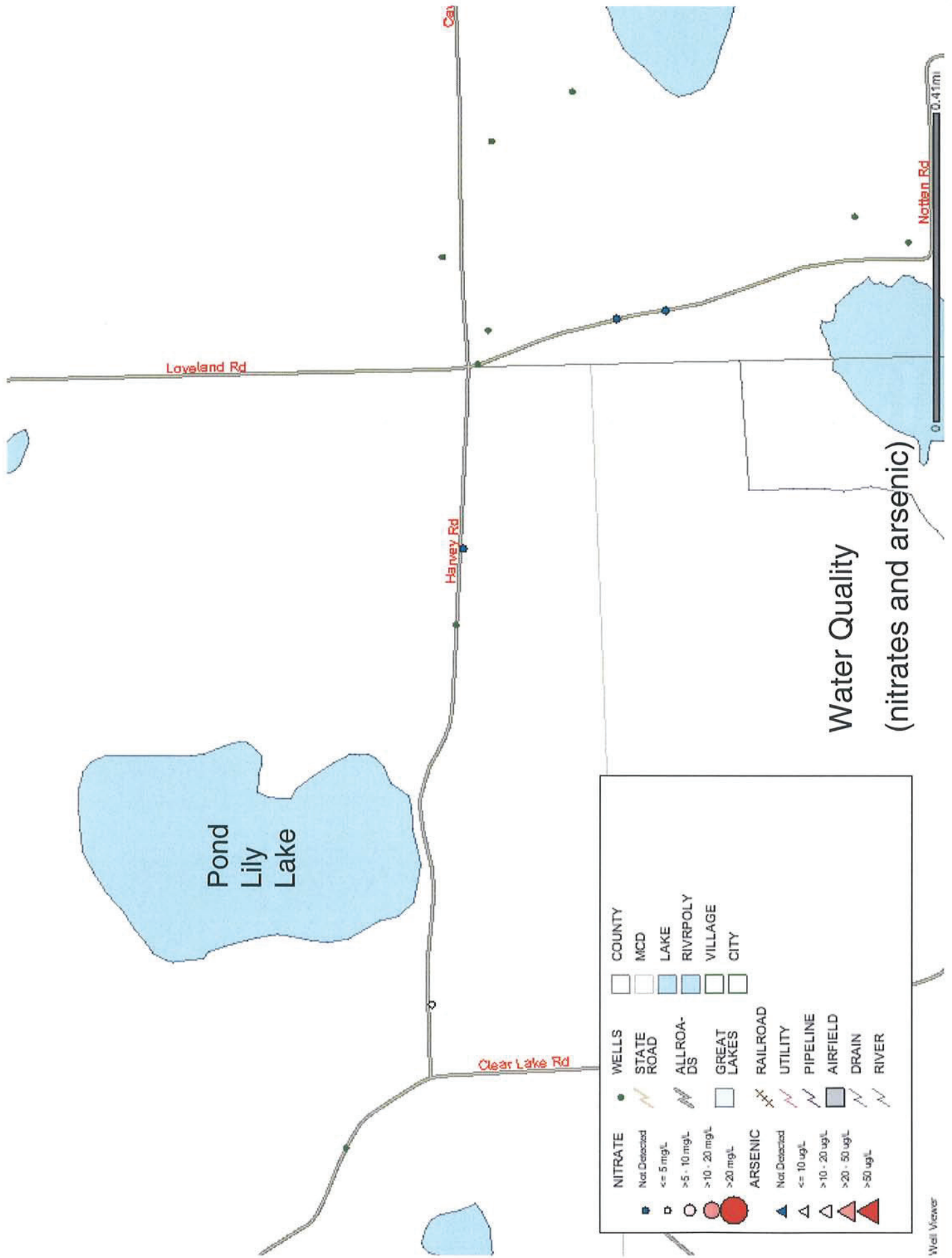


Appendix 6



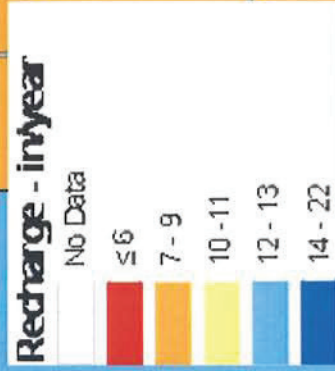
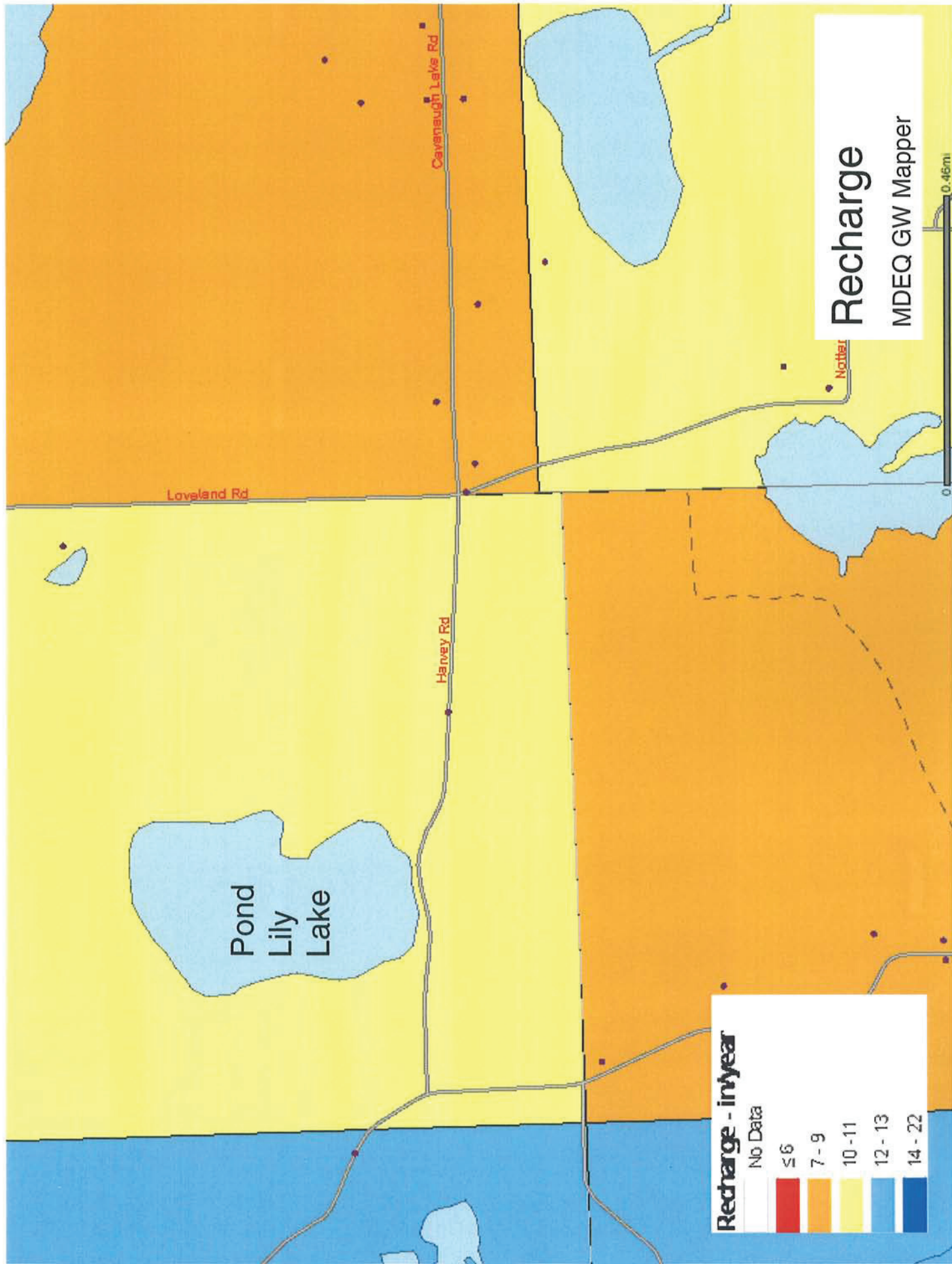
Available Well Logs (MDEQ database)

0 0.77mi



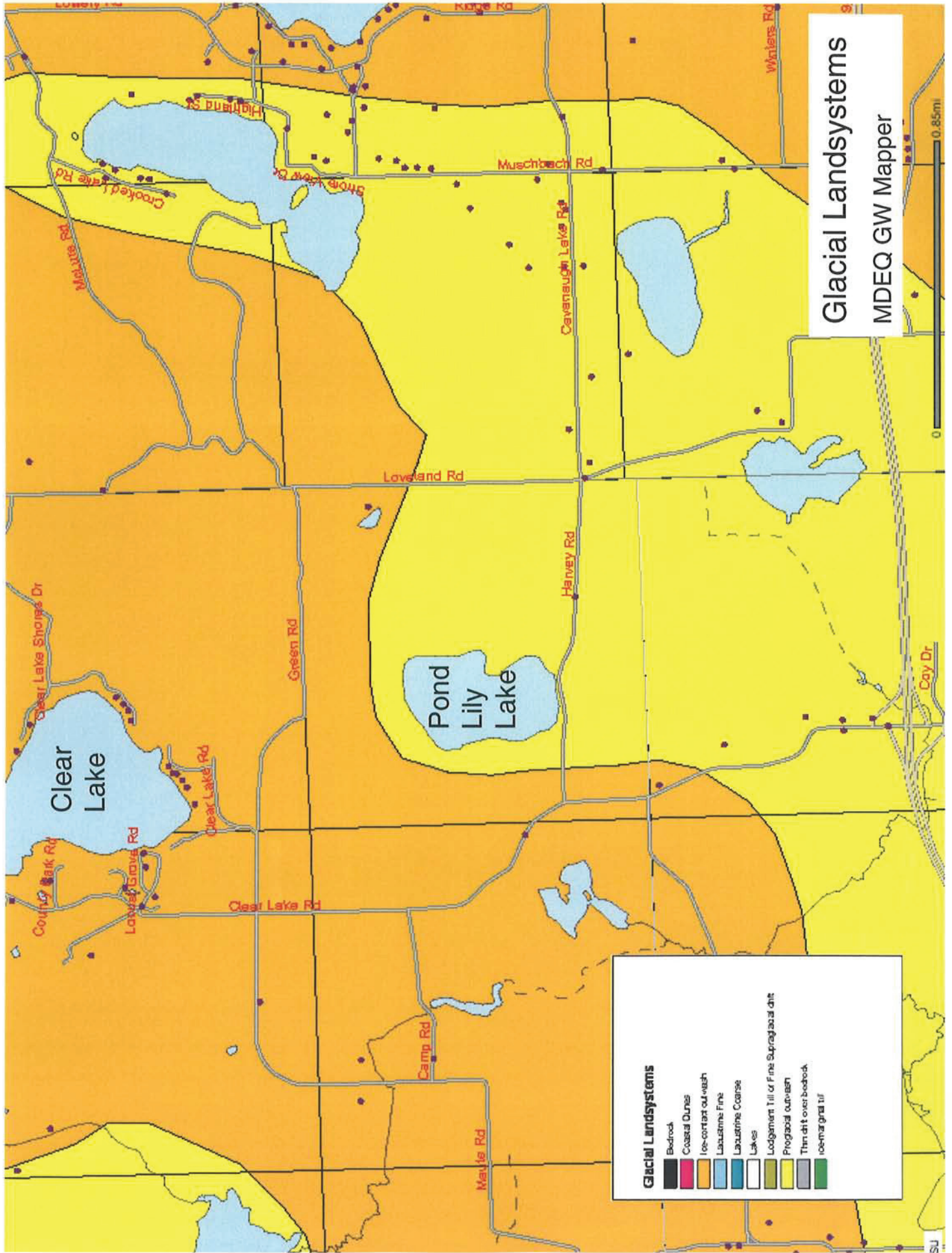
Water Quality (nitrates and arsenic)

NITRATE	WELLS	COUNTY
Not Detected	●	MCD
≤ 5 mg/L	○	LAKE
> 5 - 10 mg/L	○	RIVR/POLY
> 10 - 20 mg/L	○	VILLAGE
> 20 mg/L	○	CITY
ARSENIC	●	WELLS
Not Detected	▲	STATE ROAD
≤ 10 ug/L	▲	ALLROA-DS
> 10 - 20 ug/L	▲	GREAT LAKES
> 20 - 50 ug/L	▲	RAILROAD
> 50 ug/L	▲	UTILITY
	▲	PIPELINE
	▲	AIRFIELD
	▲	DRAIN
	▲	RIVER



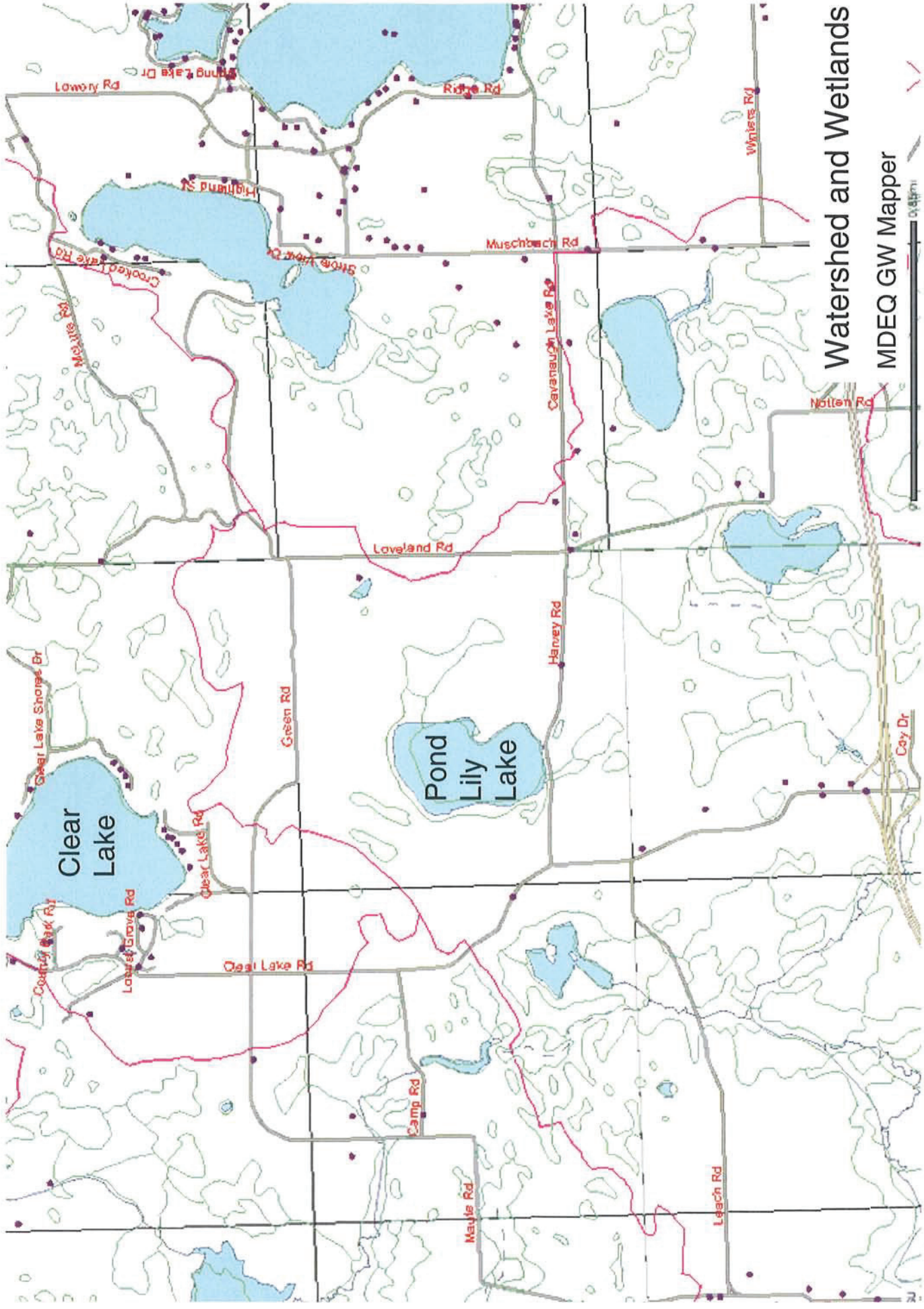
Recharge
MDEQ GW Mapper

0.46m



Glacial Landsystems
MDEQ GW Mapper

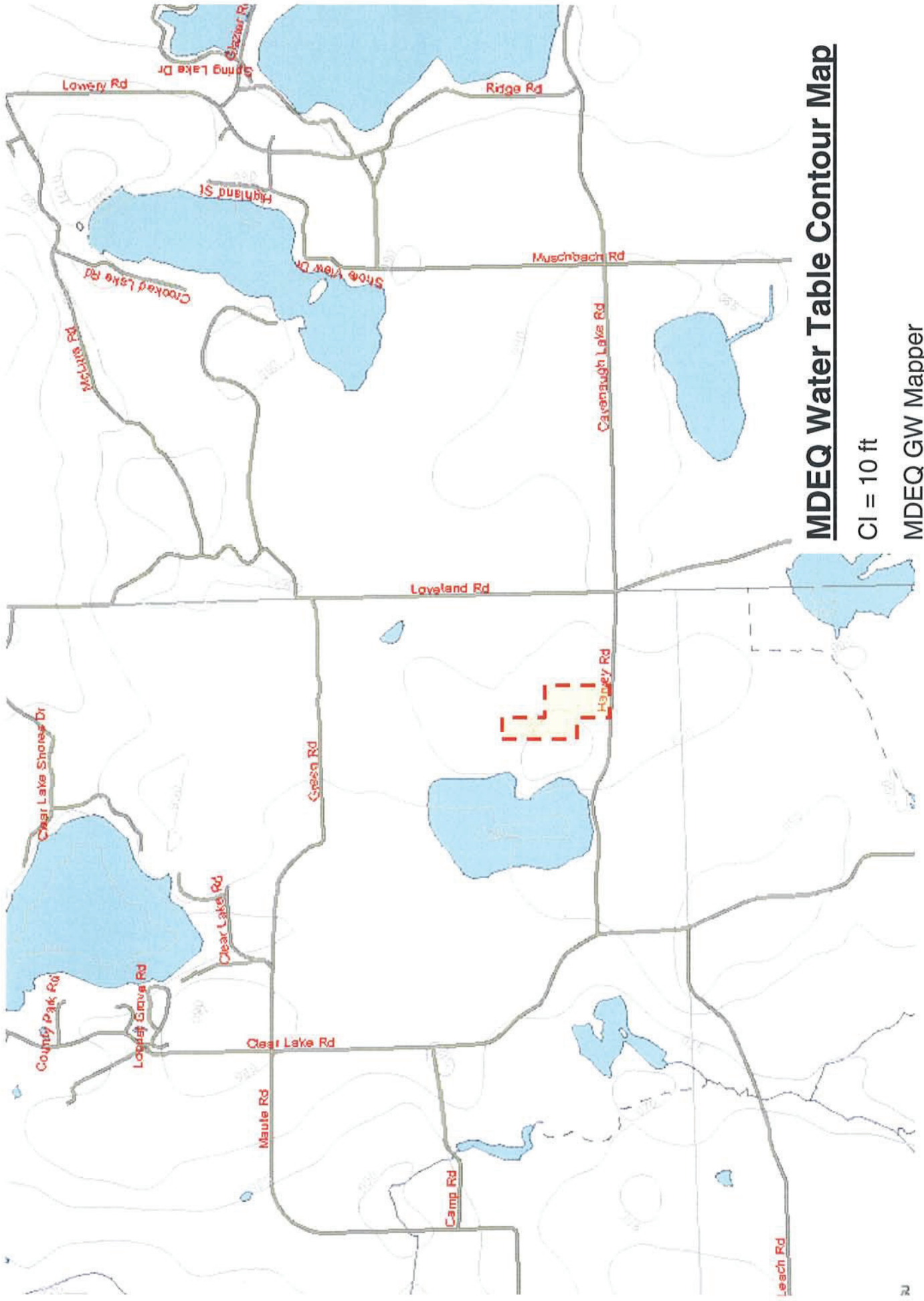
Glacial Landsystems	
	Bedrock
	Coastal Dunes
	Ice-contact outwash
	Lacustrine Fine
	Lacustrine Coarse
	Lakes
	Lodgement Till or Fine Supraglacial silt
	Proglacial outwash
	Thin dirt over bedrock
	Isothermal till



Watershed and Wetlands

MDEQ GW Mapper

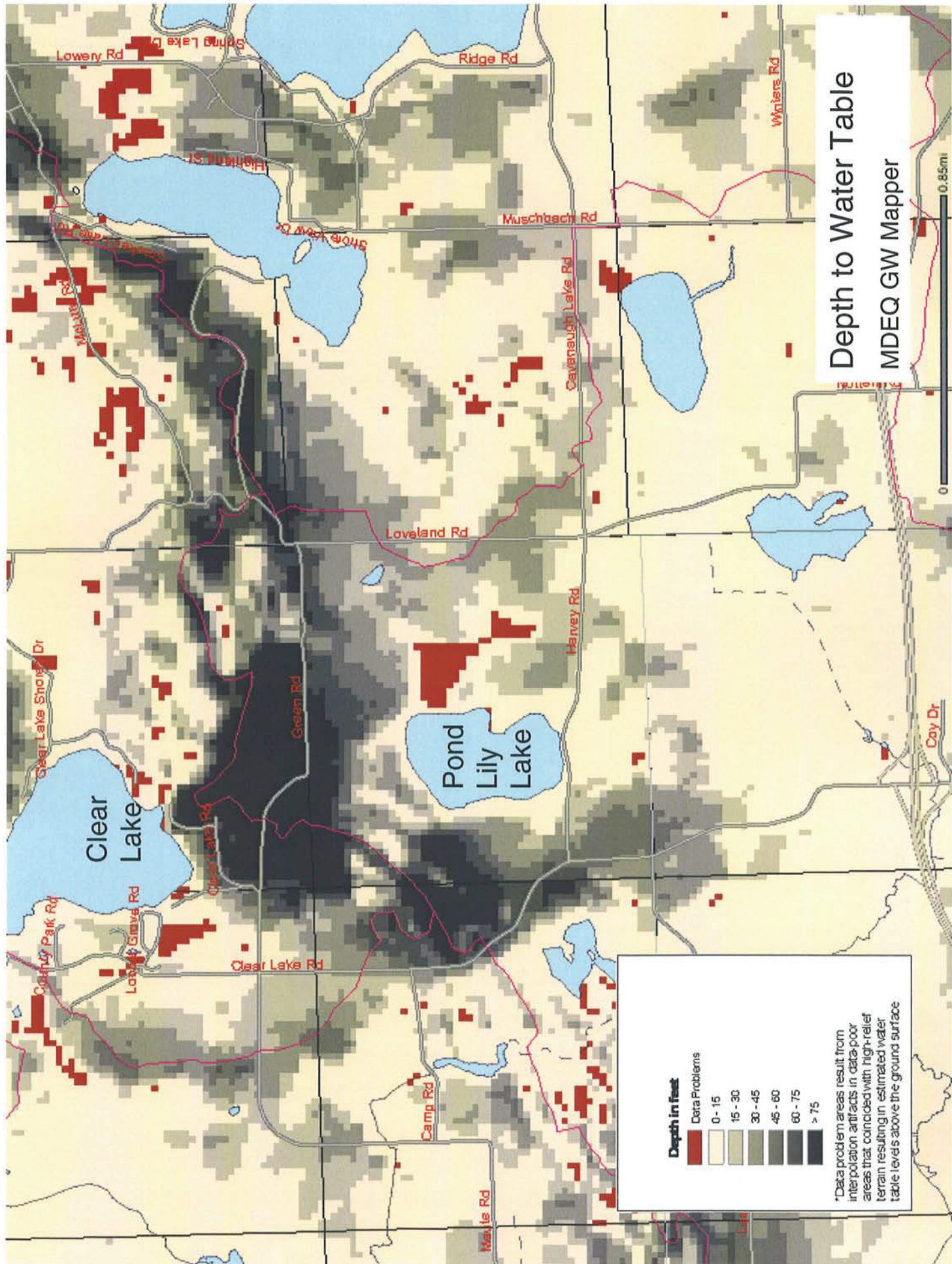




MDEQ Water Table Contour Map

CI = 10 ft

MDEQ GW Mapper



Depth to Water Table

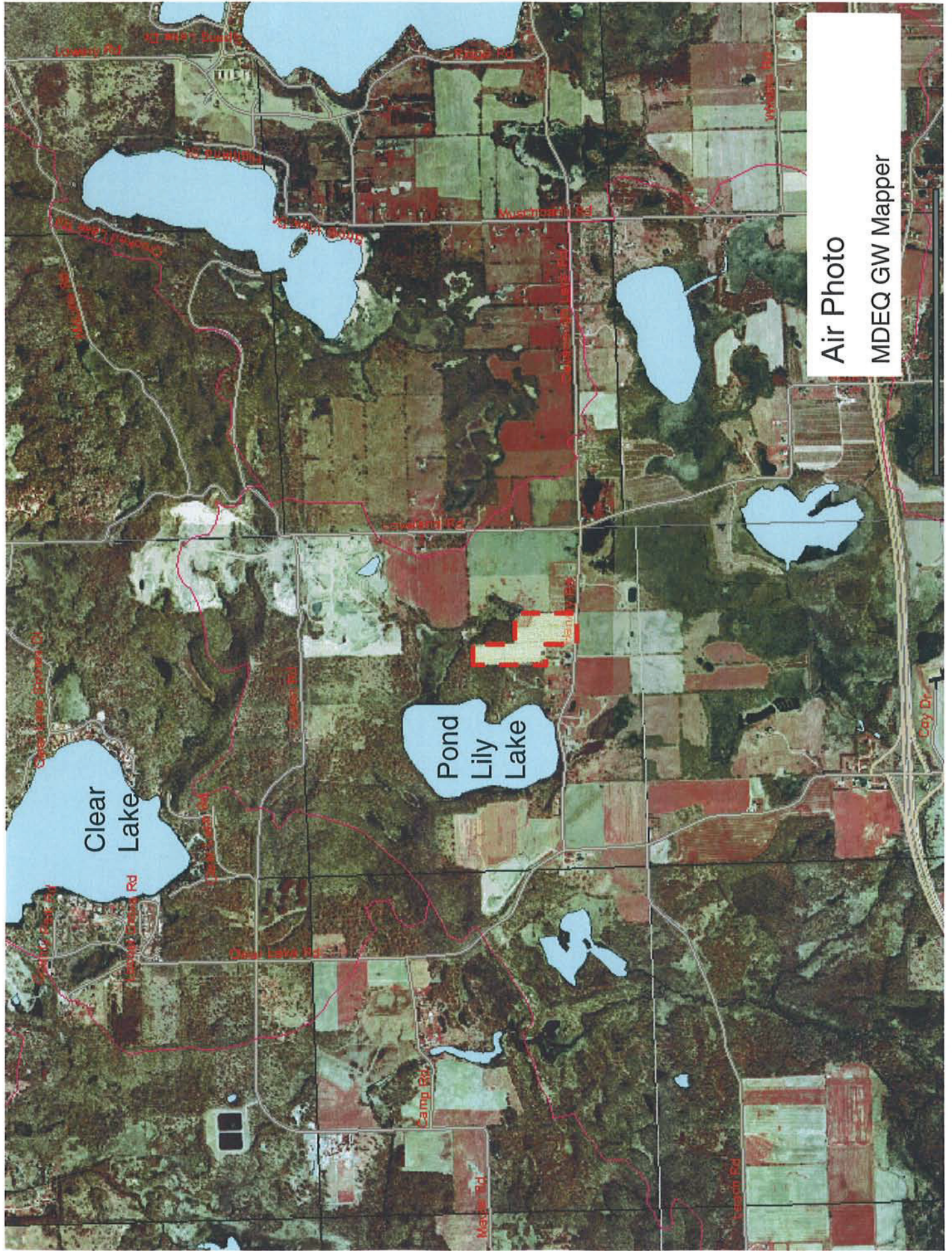
MDEQ GW Mapper



Depth in Feet

- Data Problems
- 0 - 15
- 15 - 30
- 30 - 45
- 45 - 60
- 60 - 75
- > 75

*Data problem areas result from interpolation artifacts in data-poor areas that coincided with high-relief terrain resulting in estimated water table levels above the ground surface



Air Photo
MDEQ GW Mapper