

- LEGEND**
- RESERVE LIMIT
  - 35' CONTOUR IN EXPANDED LAKE
  - 40' CONTOUR IN EXPANDED LAKE

**NORTH**

Scale: 1" = 600'

0 300 600

**LAKE EXPANSION MAP  
 AND NORTH PLANT SITE PLAN**



engineers  
 scientists  
 architects  
 constructors

**Aggregate Ind.- Chelsea Operations**  
 Waterloo Twp., Jackson County, Michigan

---

**Hydrogeologic Evaluation  
 Inland Lake Development**

PROJECT NO.	G06088
FIGURE NO.	<b>5</b>





engineers  
scientists  
architects  
constructors

# Aggregate Ind.- Chelsea Operations

Waterloo Twp., Jackson County, Michigan

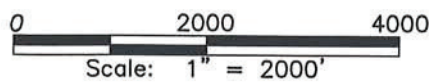
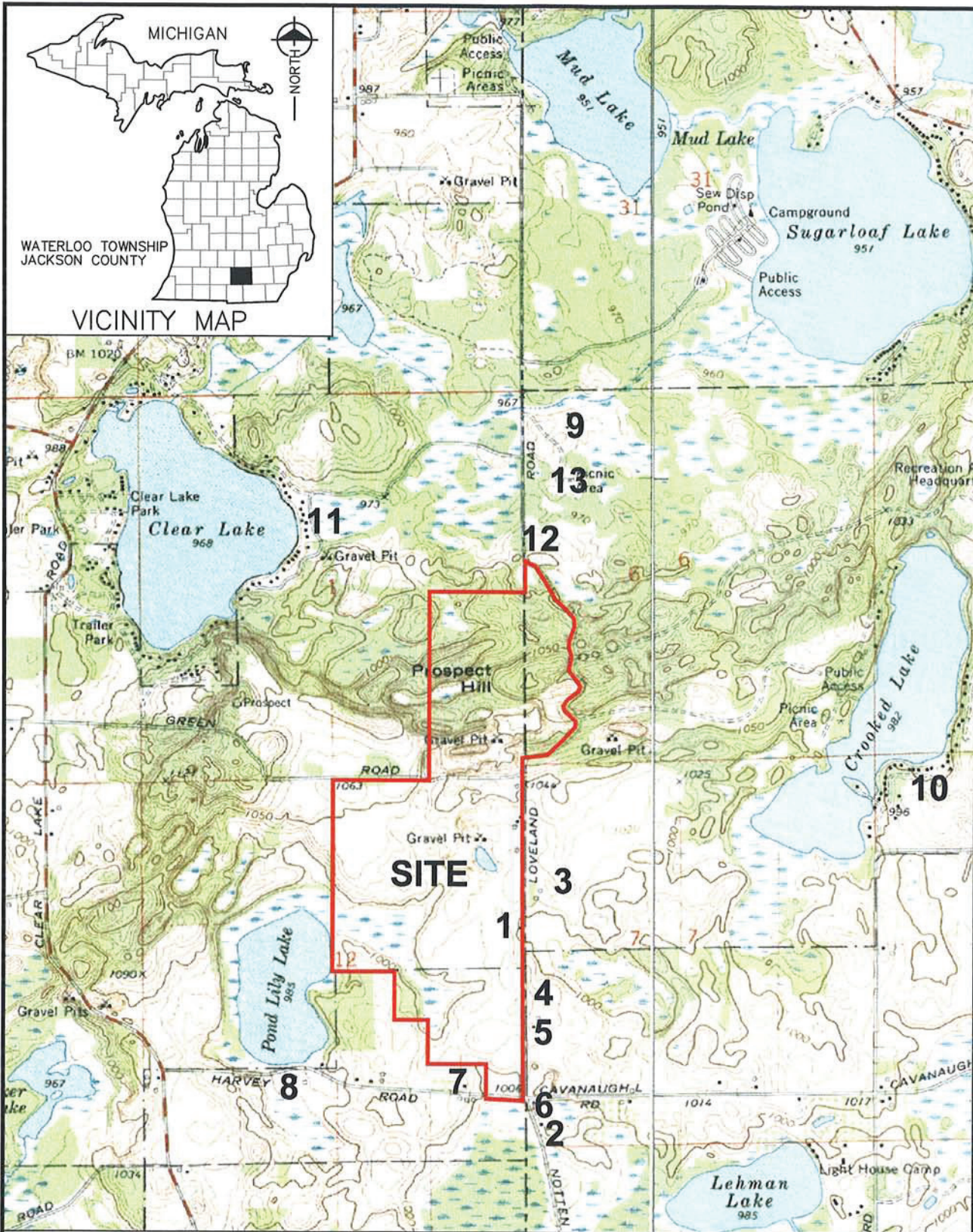
Hydrogeologic Evaluation  
Inland Lake Development

PROJECT NO.

G06088

FIGURE NO.

6



## DOMESTIC WELLS CLOSE TO THE SUBJECT PROPERTY

REFERENCE:  
GRASS LAKE, MI  
QUADRANGLE 7.5 MINUTE  
SERIES DATED: 1973

CHELSEA, MI  
QUADRANGLE 7.5 MINUTE  
SERIES DATED: 1973

WATERLOO TOWNSHIP  
JACKSON COUNTY

VICINITY MAP

MICHIGAN

NORTH

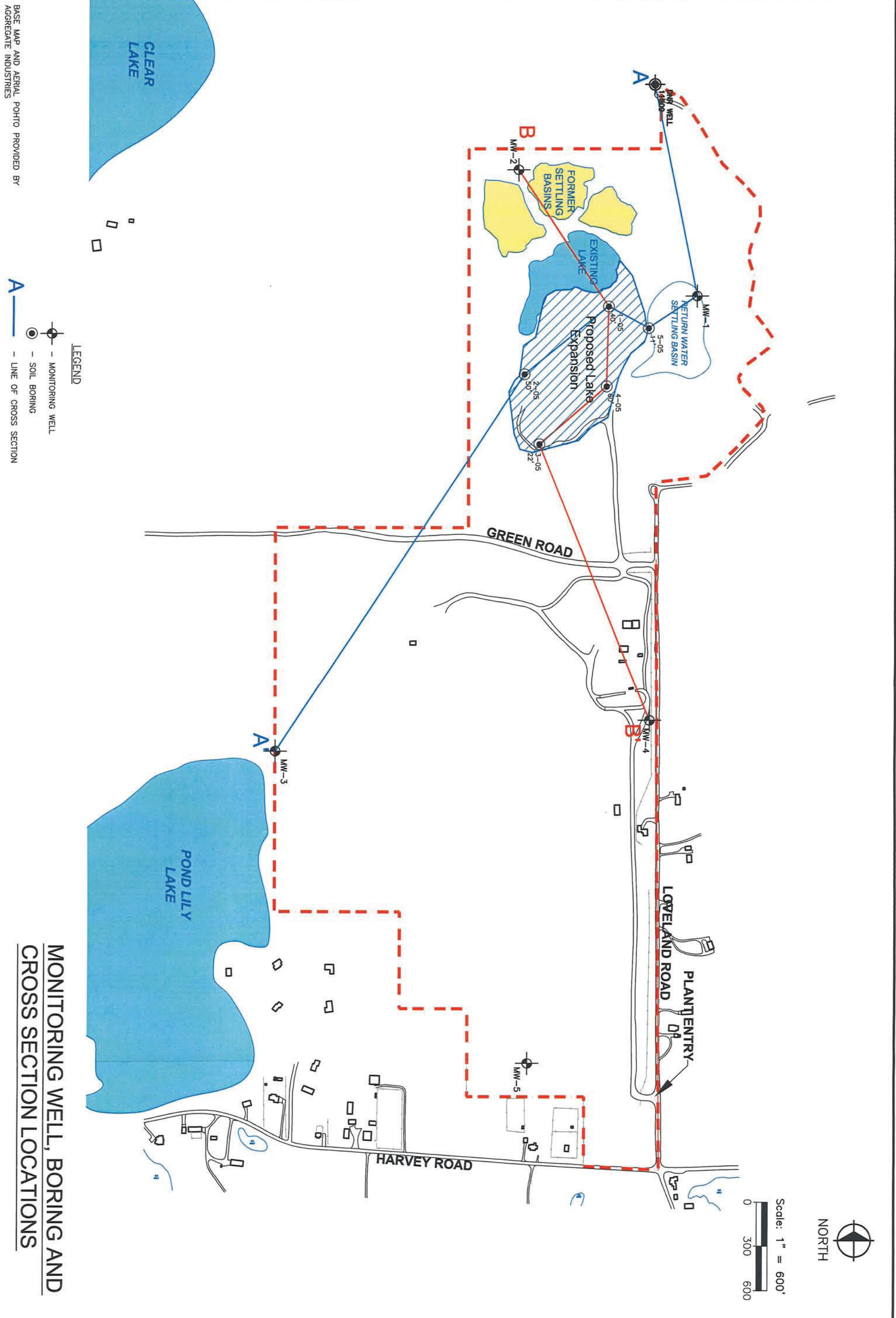
DATE: 5/11/2006 TIME: 8:57:38 AM USER: ACS

PLOT INFO: N:\06088\CD\Z00506088.DWG

N:\06088\WAS\ILK\06088.DWG  
N:\06088\WAS\RASTER\TOPOZ.TIF



Copyright 2006 All Rights Reserved



Scale: 1" = 600'  
 0 300 600

BASE MAP AND AERIAL PHOTO PROVIDED BY  
 AGGREGATE INDUSTRIES

**LEGEND**

- MONITORING WELL
- SOIL BORING
- LINE OF CROSS SECTION

**MONITORING WELL, BORING AND  
 CROSS SECTION LOCATIONS**

**Aggregate Ind.- Chelsea Operations**

Waterloo Twp., Jackson County, Michigan

**Hydrogeologic Evaluation  
 Inland Lake Development**

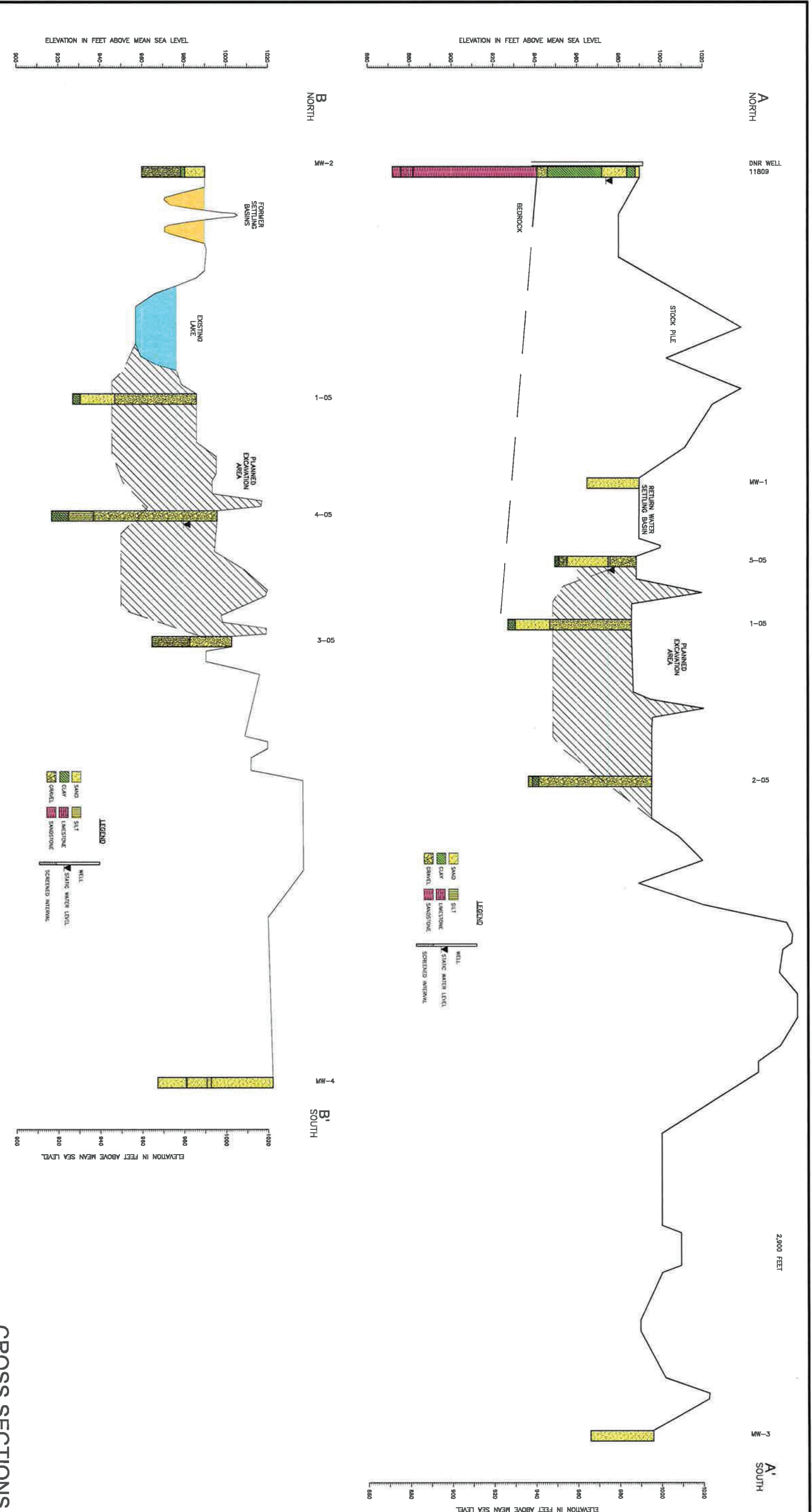
- engineers
- scientists
- architects
- constructors



PROJECT NO.  
 G06088

FIGURE NO.  
 7

fishbeck, thompson, carr & huber, inc.



PROJECT NO. G060088
FIGURE NO. 8

**Aggregate Ind.- Chelsea Operations**  
 Waterloo Twp., Jackson County, Michigan  
**Hydrogeologic Evaluation**  
**Inland Lake Development**

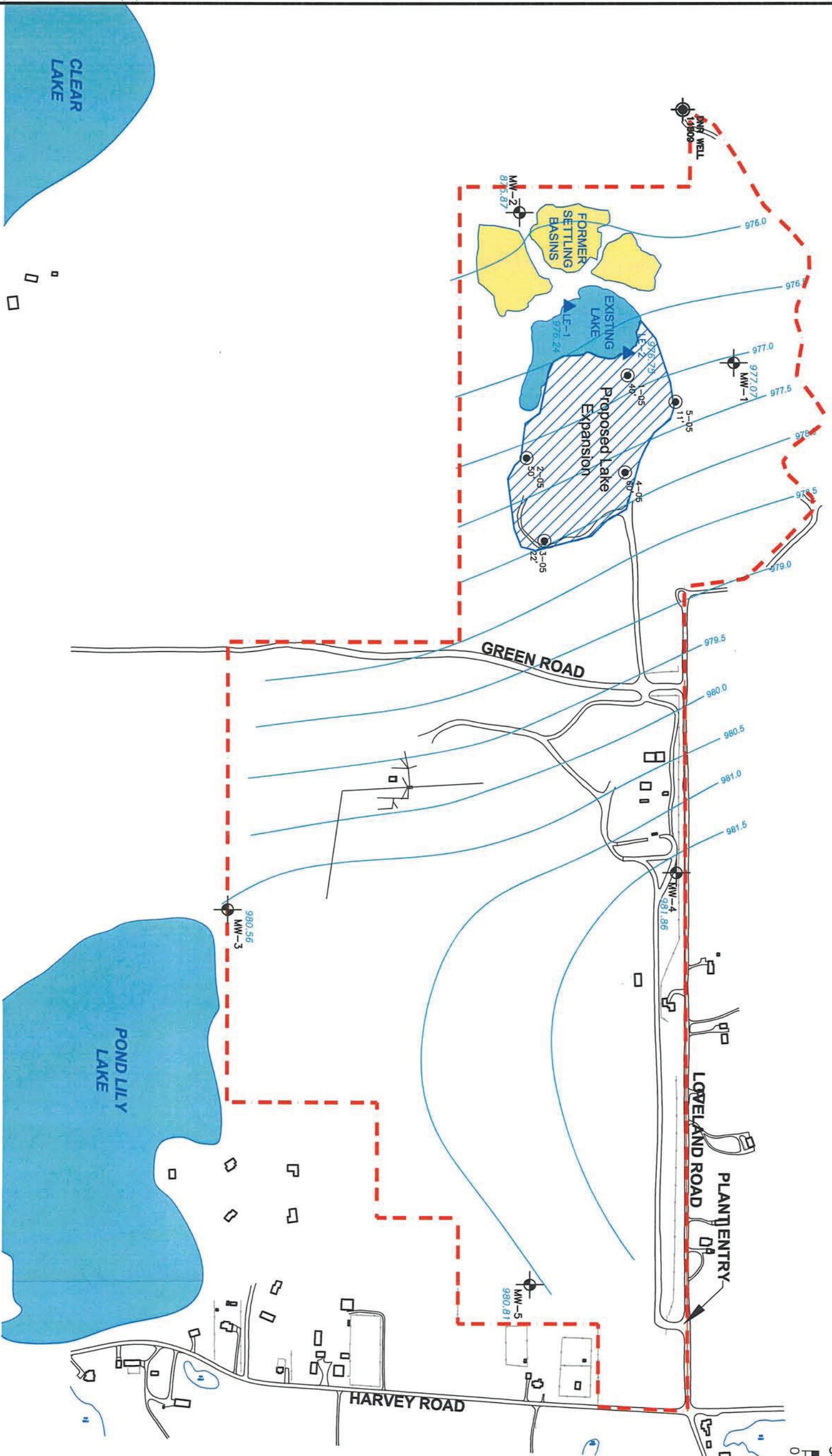
**50**  
 years

**fic+h**  
 engineers  
 scientists  
 architects  
 constructors



Copyright 2006 All Rights Reserved

BASE MAP AND AERIAL PHOTO PROVIDED BY  
 AGGREGATE INDUSTRIES



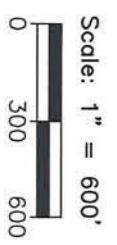
**LEGEND**

- MONITORING WELL
- SOIL BORING
- POTENTIOMETRIC SURFACE CONTOUR (FEET AMSL)
- POTENTIOMETRIC SURFACE ELEVATION (FEET AMSL)

**POTENTIOMETRIC SURFACE  
 CONTOUR MAP**  
 FEBRUARY 13, 2006



NORTH



engineers  
 scientists  
 architects  
 constructors

**Aggregate Ind.- Chelsea Operations**  
 Waterloo Twp., Jackson County, Michigan  
**Hydrogeologic Evaluation  
 Inland Lake Development**

PROJECT NO.  
 G06088  
 FIGURE NO.  
**9**